

## 2.0-4.0 GHz 6 Way Power Divider

Part Number: **AM2000-4000PD6-1234**

### Electrical Specifications

**Frequency Range:** 2.0-4.0 GHz  
**Insertion Loss :** 1.7 dB Max.  
**Isolation:** 17 dB Min.  
**Amplitude Balance:** 0 .5 dB Max.  
**Phase Balance:** 4° Max.  
**VSWR:** 1.60:1 Max.

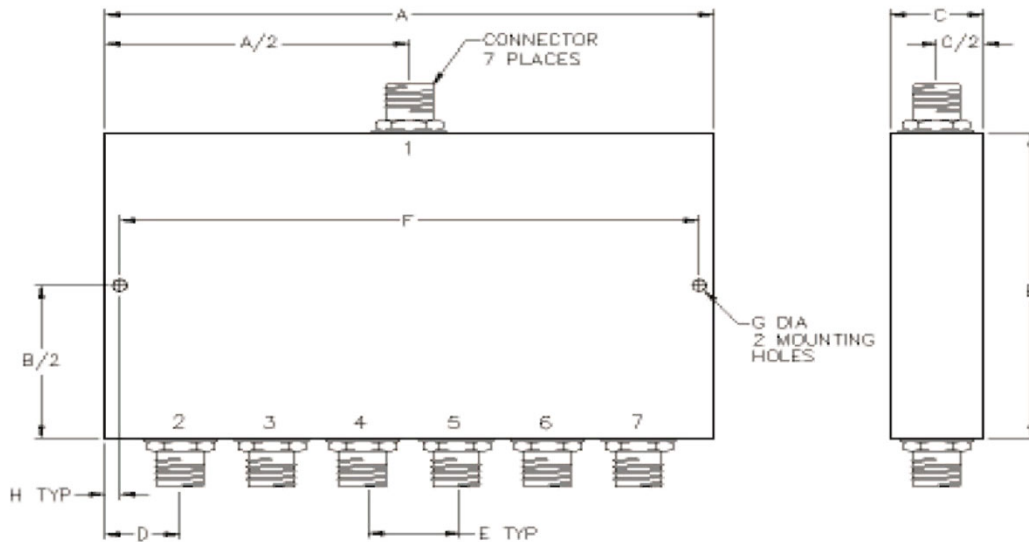
### Mechanical

**Mounting Method:** Threaded Mounting Holes  
**Connector Type:** SMA Female  
**Dimensions:** 4.00 x 3.45 x 0.40 in.

### Environmental

**Operating Temperature:** -40 to +85°C  
**Storage Temperature:** -55 to +95°C  
**Shock:** 20 G. 11ms  
**Vibration:** 20 G. 5 to 200 MHz.

### Outline Drawing:



Dimensions:

A: 4.00	B: 3.45
C: .40	D: .50
E: .60	F: 3.75
G: .125	H: .125