

1-300 MHz 6 Way Power Divider

Part Number: AM1-300PD6-1213

Electrical Specifications

Frequency range: 1-300 MHz
Insertion Loss: 1.5 dB Max.
Isolation: 20 dB Min.
Amplitude Balance: 0.4 dB Max.
Phase Balance: 5° Max.
VSWR: 1.50:1 Max.
Power Rating: 1 Watt Max.

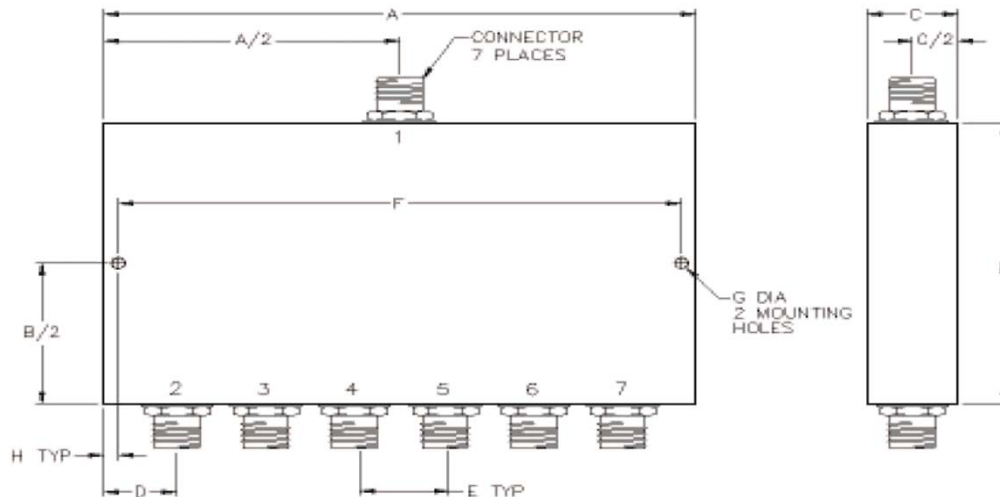
Mechanical

Mounting Method: Mounting Holes
Connector Type: SMA
Dimensions: 4.75 x 3.00 x 0.50 in.

Environmental

Operating Temperature: -40 to +85°C
Storage Temperature: -55 to +125°C
Shock: 20 G. 11 ms.
Vibration: 20 G. 5 to 200 Hz.

Outline Drawing:



Dimensions:

A: 4.75	B: 3.00
C: .50	D: .50
E: .75	F: 4.50
G: .125	H: .125