

10-250 MHz 2 Way Power Divider

Part Number: **AM10-250PD2-904**

Electrical Specifications

Frequency range: 10-250 MHz
Insertion loss: 0.5 dB Max.
Isolation: 25 dB Min.
Amplitude Balance: 0.25 dB Max.
Phase Balance: 5° Max.
VSWR: 1.30:1 Max.
Input Power: 200 Watts Max.

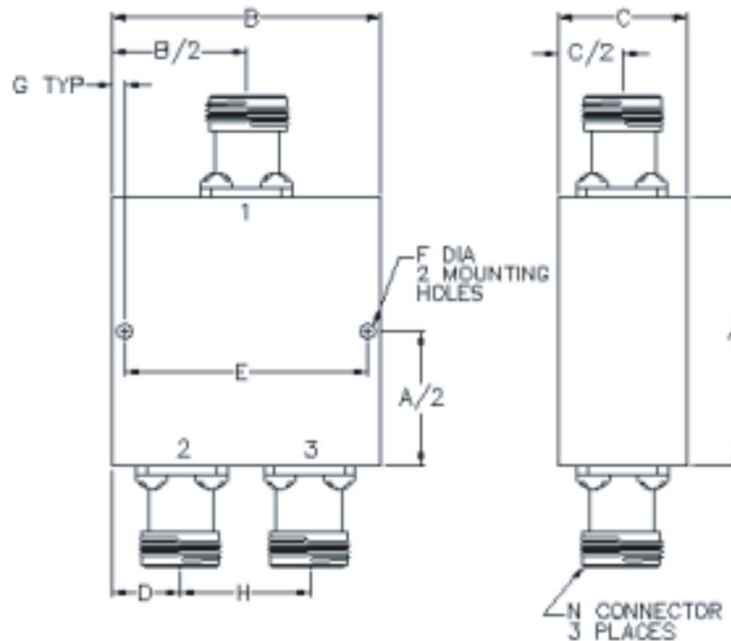
Mechanical

Mounting Method: Mounting Holes
Dimensions: 4.00 x 3.00 x 1.50 in.

Environmental

Operating Temperature: -40 to +85°C
Storage Temperature: -55 to +125°C
Shock: 20 G. 11 ms.
Vibration: 20 G. 5 to 200 Hz.

Outline Drawing:



A: 3.00	B: 4.00
C: 1.50	D: 1.00
E: 3.80	F: 0.12
G: 0.10	H: 2.00