

Electrical Specifications

Frequency Range: 10-500 MHz
Insertion Loss: 1 dB Max.
Isolation: 20 dB Min.
Amplitude Balance: 0.5 dB Max.
Phase Balance: 4° Max.
VSWR: 1.30:1 Max.
Power Rating: 100 Watts Max.

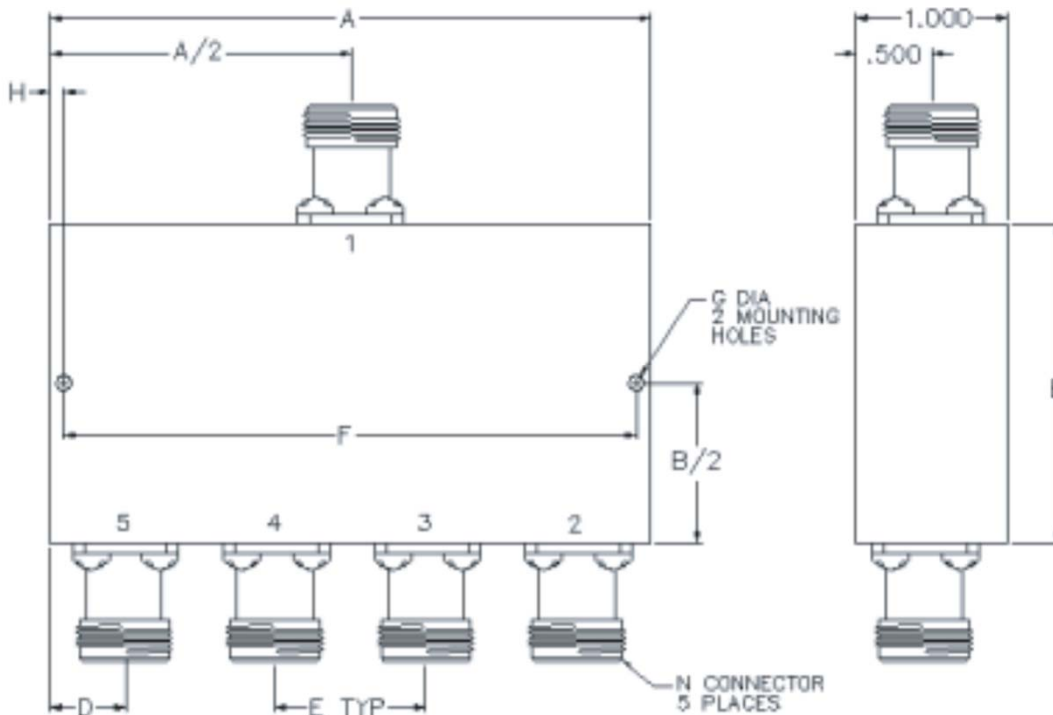
Mechanical

Mounting Method: Threaded Mounting Holes
Connector Type: N-Type
Dimensions: 4.00 x 3.40 x 1.00 in.

Environmental

Operating Temperature: -40 to +85°C
Storage Temperature: -55 to +125°C
Shock: 20 G. 11 ms.
Vibration: 20 G. 5 to 200 Hz.

Outline Drawing:



Dimensions

A: 4.00	B: 3.40
C: 1.00	D: .50
E: 1.00	F: 3.75
G: .125	H: .125