

**Electrical Specifications**

**Frequency Range:** 1.0-1.5 GHz  
**Insertion Loss:** 0.3 dB Max.  
**Isolation:** 20 dB Min.  
**Amplitude Balance:** 0.3 dB Max.  
**Phase Balance:** 6° Max.  
**VSWR:** 1.35:1 Max.  
**Power Rating:** 1 Watt Max.

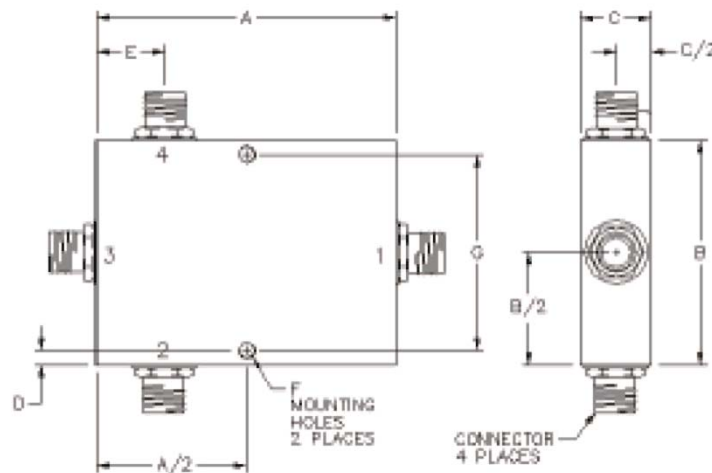
**Mechanical**

**Mounting Method:** Threaded Mounting Holes  
**Connector Type:** SMA  
**Dimensions:** 3.20 x 1.50 x 0.51 in.

**Environmental**

**Operating Temperature:** -40 to +85°C  
**Storage Temperature:** -55 to +125°C  
**Shock:** 20 G. 11 ms.  
**Vibration:** 20 G. 5 to 200 Hz.

**Outline Drawing:**



A: 3.20 B: 1.50  
 C: 0.51 D: .125  
 E: .59 F: .125  
 G: 1.25