

1.0-2.0 GHz 4 Way Power Divider

Part Number: AM1000-2000PD4-1112

Electrical Specifications

Frequency Range: 1.0-2.0 GHz
Insertion Loss: 0.8 dB Max.
Isolation: 18 dB Min.
Amplitude Balance: 0.4 dB Max.
Phase Balance: 6.0° Max.
VSWR: 1.40:1 Max.
Power CW: 30 Watts Max.

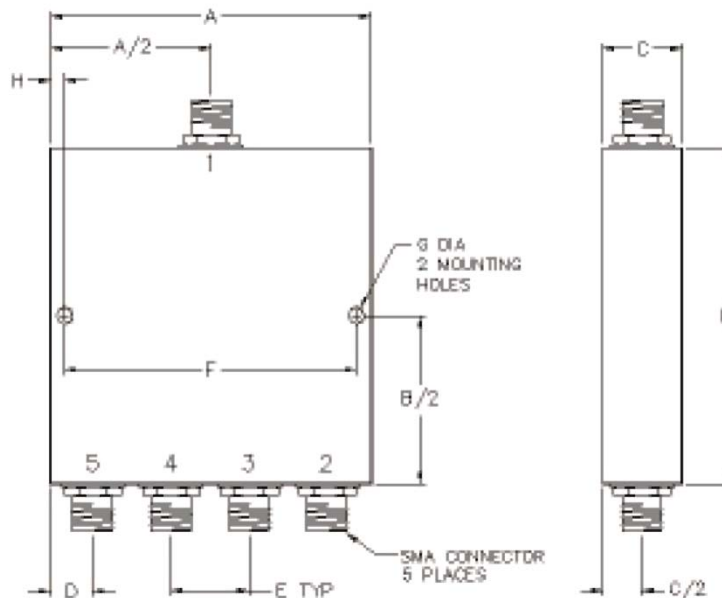
Mechanical

Mounting Method: Threaded Mounting Holes
Connector Type: N-Type
Dimensions: 4.00 x 2.15 x 1.00 in.

Environmental

Operating Temperature: 0 to +70°C
Storage Temperature: -55 to +120°C
Shock: 20 G. 11 ms.
Vibration: 20 G. 5 to 200 Hz.

Outline Drawing:



Dimensions:

A: 4.00	B: 2.15
C: 1.00	D: .50
E: 1.00	F: 3.60
G: .125	H: .200