

1.0-3.0 GHz 12 Way Power Divider

Part Number: AM1000-3000PD12-1314

Electrical Specifications

Frequency Range: 1.0-3.0 GHz
Insertion Loss: 1.5 dB Max.
Isolation: 15 dB Min.
Amplitude Balance: 0.5 dB Max.
Phase Balance: 6° Max.
VSWR: 1.80:1 Max.
Impedance: 50 Ohms

Mechanical

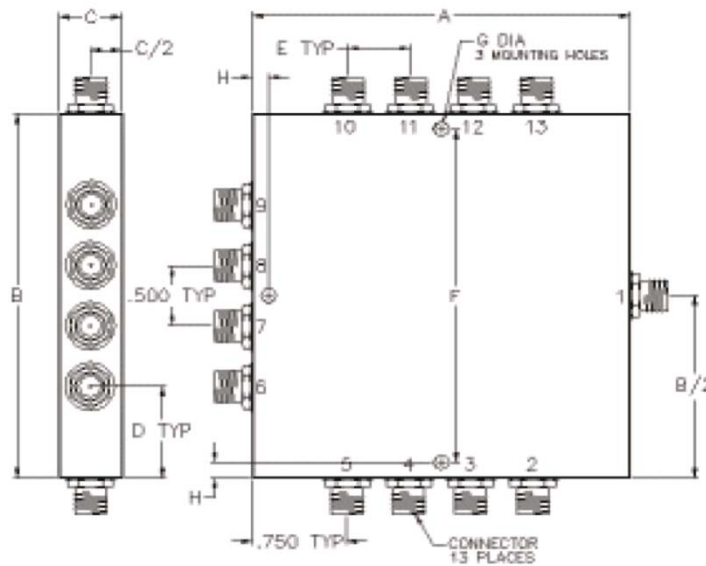
Mounting Method: Threaded Mounting Holes
Connector Type: SMA (F)
Dimensions: 4.00 x 4.00 x 0.40 in.

Environmental

Operating Temperature: -30 to +60°C
Storage Temperature: -55 to +120°C
Shock: 20 G. 11 ms.
Vibration: 20 G. 5 to 200 Hz.

*Note: Available in BNC, TNC, and F connectors and other frequency ranges.

Outline Drawing:



Dimensions:

A: 4.00	B: 4.00
C: 0.40	D: 1.25
E: 0.50	F: 3.78
G: .125	H: .110