

# 1.0-4.0 GHz 4 Way Power Divider

**Part Number: AM1000-4000PD4-1121**

## Electrical Specifications

**Frequency range:** 1.0-4.0 GHz  
**Insertion Loss :** 1 dB Max.  
**Isolation:** 20 dB Min.  
**Amplitude Balance:** 0.4 dB Max.  
**Phase Balance:** 6° Max.  
**VSWR:** 1.50:1 Max.  
**Input Power:** 30 Watts Max.

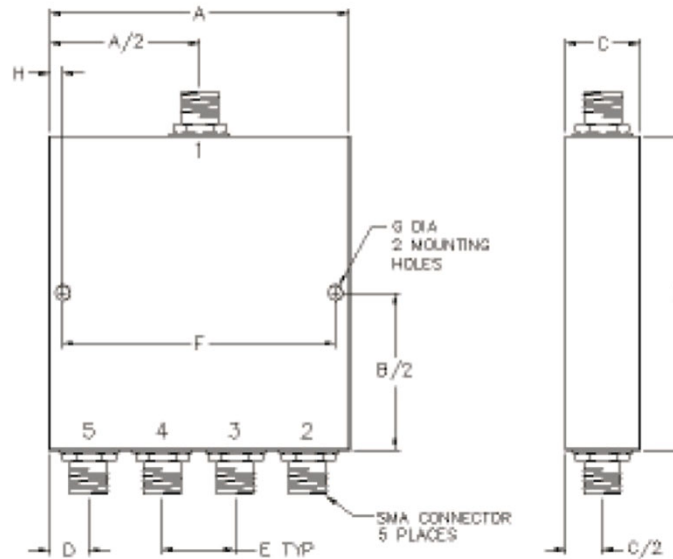
## Mechanical

**Mounting Method:** Threaded Mounting Holes  
**Connector Type:** SMA Female  
**Dimensions:** 3.60" x 3.40" x 0.51" in

## Environmental

**Operating Temperature:** -40 to +85°C  
**Storage Temperature:** -55 to +95°C  
 Shock: 20 G. 11ms  
 Vibration: 20 G. 5 to 200 MHz.

## Outline Drawing:



Dimensions:

A: 3.60	B: 3.40
C: .51	D: .75
E: .67	F: 3.35
G: .125	H: .125