

### Electrical Specifications

**Frequency Range:** 160-500 MHz

**Coupling Value:**

48 MHz; 46 +/- 2 dB

160 MHz; 30 +/- 1 dB

380 MHz; 23 +/- 1 dB

500 MHz; 42 +/-2 dB

**Insertion Loss:**

160 MHz; 0.05 dB Max.

500 MHz; 0.1 dB Max.

**Directivity:**

160-500 MHz; 25 Min.

**VSWR and (Return Loss):**

J1 and J2; 1.12 (25 dB Min)

Coupled Port, J3 and J4; 1.3 (17.7 dB)

**Impedance:** 50 Ohm

**Intermodulation IM3:**

(2 x 43 dBm carrier) <-150 dBc

**Max. Power:** 500 W AVE, 3KW Peak (at 20 °C ambient temperature)

**Termination Max. Power:** 3 W AVE

### Mechanical

**Connector Type:** 7/16 DIN (M/F) and N (F), flange with o-ring

**Dimensions:** 203.6 x 94.8 x 38.1 mm

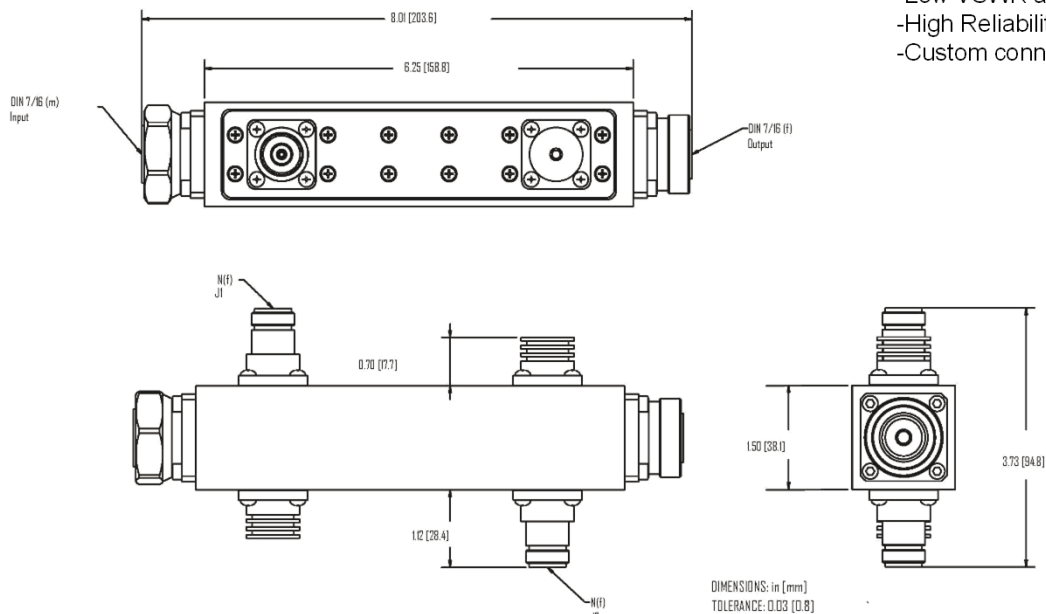
**Weight approx.:** 1.2 kg (2.64 lb)

### Environmental

**Operating Temperature:** -40 to 85° C

**Storage Temperature:** -55 to +100° C

### Outline Drawing:



- 500 W Average Power
- Low VSWR and Loss
- High Reliability, Low PIM
- Custom connectors configuration

### Response Plots:

