

1.7-1.9 GHz 6 Way Power Divider

Part Number: AM1700-1900PD6-1226

Electrical Specifications

Frequency Range: 1.7-1.9 GHz
Insertion Loss: 0.8 dB Max.
Isolation: 20 dB Min.
Amplitude Balance: 0.3 dB Max.
Phase Balance: 5° Max.
VSWR: 1.30:1 Max.

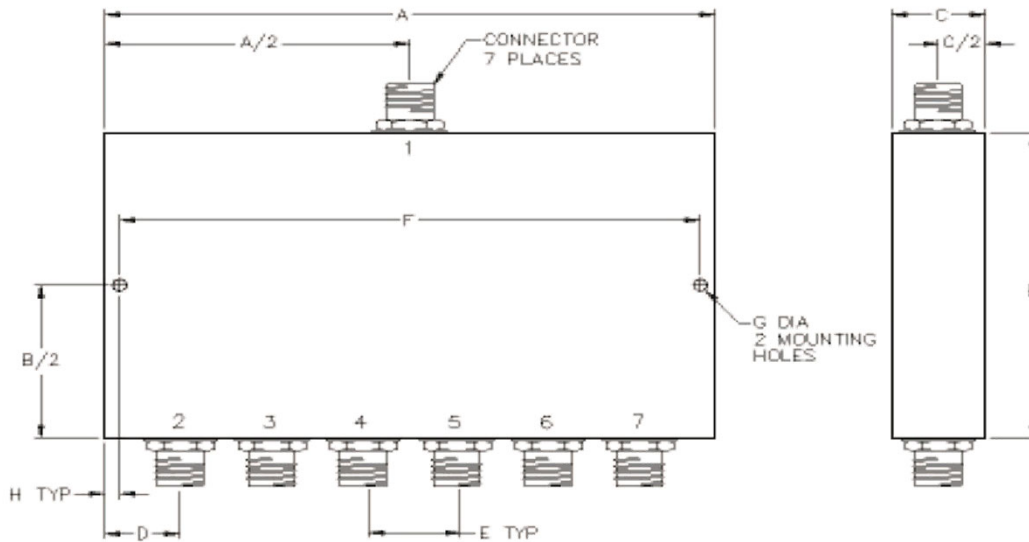
Mechanical

Mounting Method: Threaded Mounting Holes
Connector Type: N-Type (F)
Dimensions: 6.00 x 3.00 x 1.00 in.

Environmental

Operating Temperature: -40 to +80°C
Storage Temperature: -55 to +120°C
Shock: 20 G. 11 ms.
Vibration: 20 G. 5 to 200 Hz.

Outline Drawing:



Dimensions:

A: 6.00	B: 3.00
C: 1.00	D: .50
E: 1.00	F: 5.75
G: .125	H: .125