

Electrical Specifications

Frequency Range: 20-1600 MHz

Insertion Loss: 5 dB Max.

Isolation: 18 dB Min.

Amplitude Balance: 0.6 dB Max.

Phase Balance: 10° Max.

VSWR: 1.60:1 Max.

Power Rating: 1 Watt Max.

Mechanical

Mounting Method: Threaded Mounting Holes

Connector Type: SMA

Dimensions: 6.40 x 2.85 x 0.40 in.

Environmental

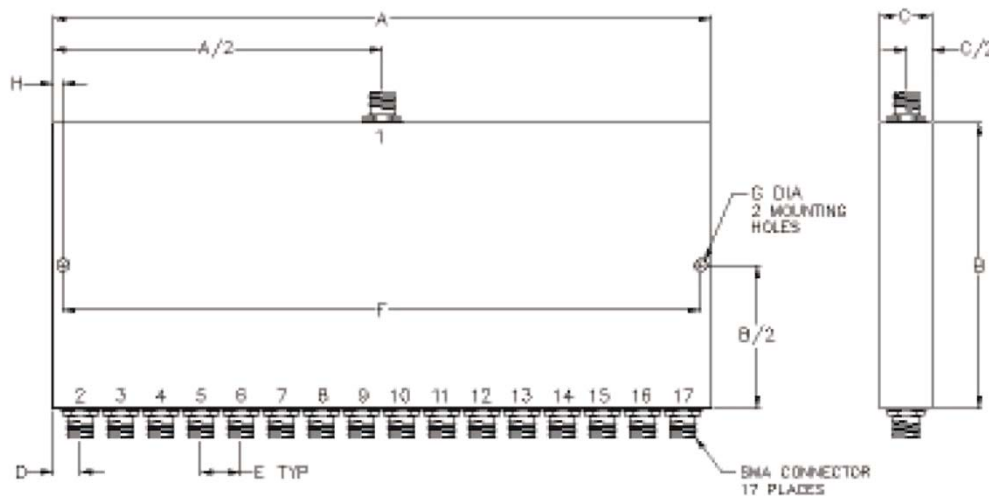
Operating Temperature: -40 to +85°C

Storage Temperature: -55 to +125°C

Shock: 20 G. 11 ms.

Vibration: 20 G. 5 to 200 Hz.

Outline Drawing:



Dimensions:

A: 6.40	B: 2.85
C: 0.40	D: .20
E: 0.40	F: 5.90
G: .149	H: .250