

**Electrical Specifications**

**Frequency Range:** 2.0-18.0 GHz  
**Insertion Loss :** 2.5 dB Max.  
**Isolation:** 15 dB Min.  
**Amplitude Balance:** 0 .8 dB Max.  
**Phase Balance:** 10° Max.  
**VSWR:** 2.0:1 Max.  
**Connector:** SMA (F)  
**Power Handling:** 30 Watts Max.

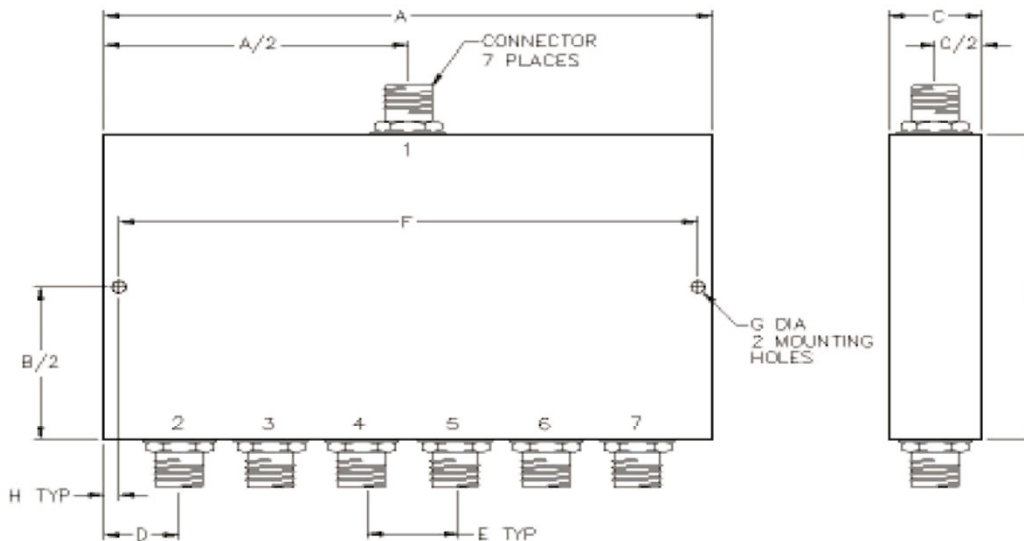
**Mechanical**

**Mounting Method:** Threaded Mounting Holes  
**Connector Type:** SMA (F)  
**Dimensions:** 4.00 x 6.00 x 0.40 in.

**Environmental**

**Operating Temperature:** -40 to +85°C  
**Storage Temperature:** -55 to +95°C  
**Shock:** 20 G. 11ms  
**Vibration:** 20 G. 5 to 200 MHz

**Outline Drawing:**



**Dimensions:**

A: 4.00	B: 6.00
C: .40	D: .50
E: .60	F: 3.70
G: .125	H: .150