

Electrical Specifications

Frequency Range: 2.0-4.0 GHz
Insertion Loss : 0.6 dB Max.
Isolation: 18 dB Min.
Amplitude Balance: 0.5 dB Max.
Phase Balance: 6° Max.
VSWR: 1.40:1 Max.
Input Power: 30 Watt Max.

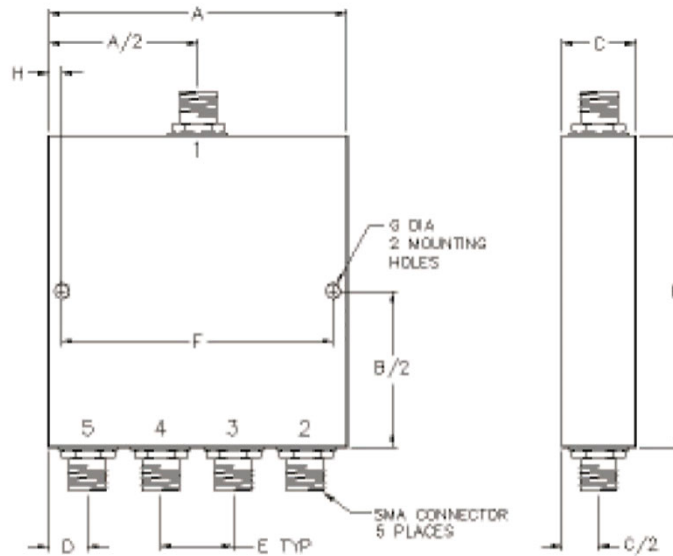
Mechanical

Mounting Method: Threaded Mounting Holes
Connector Type: N-Type
Dimensions: 4.00 x 2.15 x 1.00 in.

Environmental

Operating Temperature: -40 to +85°C
Storage Temperature: -55 to +95°C
Shock: 20 G. 11ms
Vibration: 20 G. 5 to 200 MHz.

Outline Drawing:



Dimensions:

| | |
|---------|---------|
| A: 4.00 | B: 2.15 |
| C: 1.00 | D: .50 |
| E: 1.00 | F: 3.60 |
| G: .125 | H: .200 |