

## 2-8 GHz 4 Way Power Divider

Part Number: AM2000-8000PD4-911

### Electrical Specifications

**Frequency Range:** 2.0-8.0 GHz  
**Insertion Loss :** 1.0 dB Max.  
**Isolation:** 18 dB Min.  
**Amplitude Balance:** 0.5 dB Max.  
**Phase Balance:** 6.0° Max.  
**VSWR:** 1.45:1 Max.  
**Input Power:** 30 Watt Max.

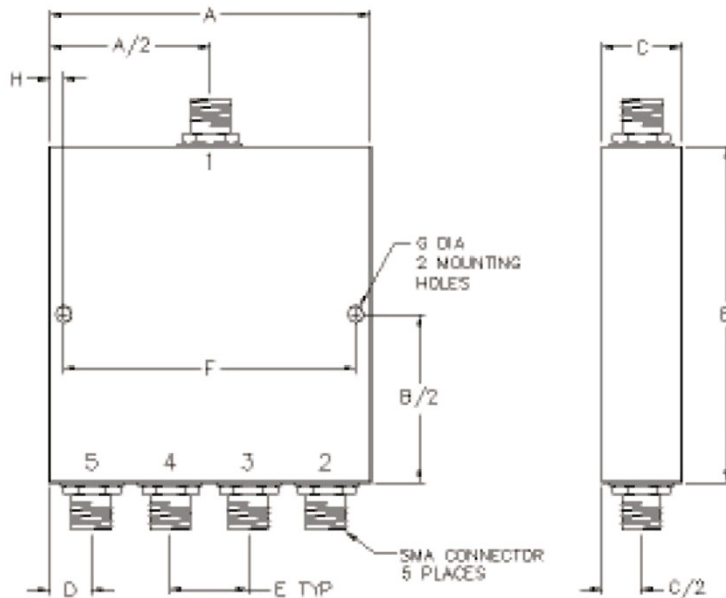
### Mechanical

**Mounting Method:** Threaded Mounting Holes  
**Connector Type:** SMA  
**Dimensions:** 2.80 x 2.00 x 0.51 in.

### Environmental

**Operating Temperature:** -40 to +85°C  
**Storage Temperature:** -55 to +95°C  
**Shock:** 20 G. 11ms  
**Vibration:** 20 G. 5 to 200 MHz.

### Outline Drawing:



#### Dimensions:

A: 2.80    B: 2.00  
C: 0.51    D: 0.40  
E: 0.67    F: 2.55  
G: 0.125    H: 0.125