

Electrical Specifications

Frequency Range: 2.0-8.0 GHz
Insertion Loss : 1.4 dB Max.
Isolation: 16 dB Min.
Amplitude Balance: 0.7 dB Max.
Phase Balance: 10 Max.
VSWR: 1.60:1 Max.

Mechanical

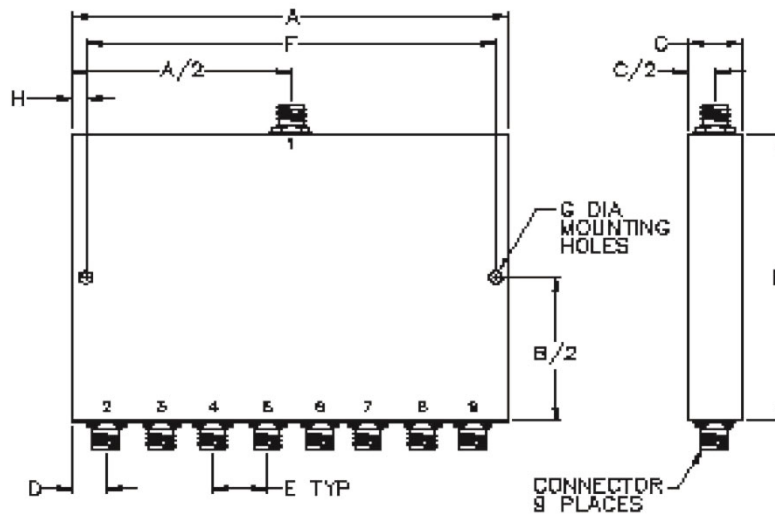
Mounting Method: Threaded Mounting Holes
Connector Type: N-Type
Dimensions: 8.00 x 2.50 x 1.00 in.

Environmental

Operating Temperature: -40 to +85°C
Storage Temperature: -55 to +95°C
Shock: 20 G. 11ms
Vibration: 20 G. 5 to 200 MHz.

*Note: Available with BNC, TNC, and F, connectors.

Outline Drawing:



Dimensions:

A: 8.00	B: 2.50
C: 1.00	D: .50
E: 1.00	F: 7.70
G: .150	H: .150