

Electrical Specifications

Frequency Range: 2.0-8.0 GHz

Insertion Loss : 1.4 dB Max.

Isolation: 16 dB Min.

Amplitude Balance: 0.7 dB Max.

Phase Balance: 10° Max.

VSWR: 1.60:1 Max.

Mechanical

Mounting Method: Threaded Mounting Holes

Connector Type: SMA

Dimensions: 4.00 x 2.00 x 0.40 in.

Environmental

Operating Temperature: -40 to +85°C

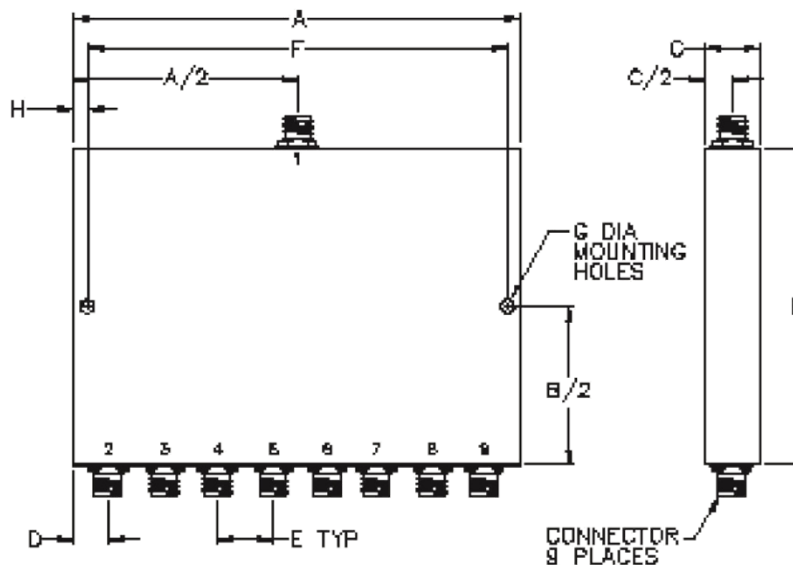
Storage Temperature: -55 to +95°C

Shock: 20 G. 11ms

Vibration: 20 G. 5 to 200 MHz.

*Note: Available with BNC, TNC, and F, connectors.

Outline Drawing:



Dimensions:

A: 4.00	B: 2.00
C: 0.40	D: .25
E: .50	F: 3.75
G: .150	H: .125