

### Electrical Specifications

**Frequency Range:** 3.62-4.25 GHz

**Insertion Loss :** 0.6 dB Max.

**Isolation:** 19 dB Min.

**Amplitude Balance:** 0.5 dB Max.

**Phase Balance:** 6° Max.

**VSWR:** 1.40:1 Max.

**Input Power:** 30 Watt Max.

### Mechanical

**Mounting Method:** Threaded Mounting Holes

**Connector Type:** N-Type

**Dimensions:** 4.00 x 2.15 x 1.00 in.

### Environmental

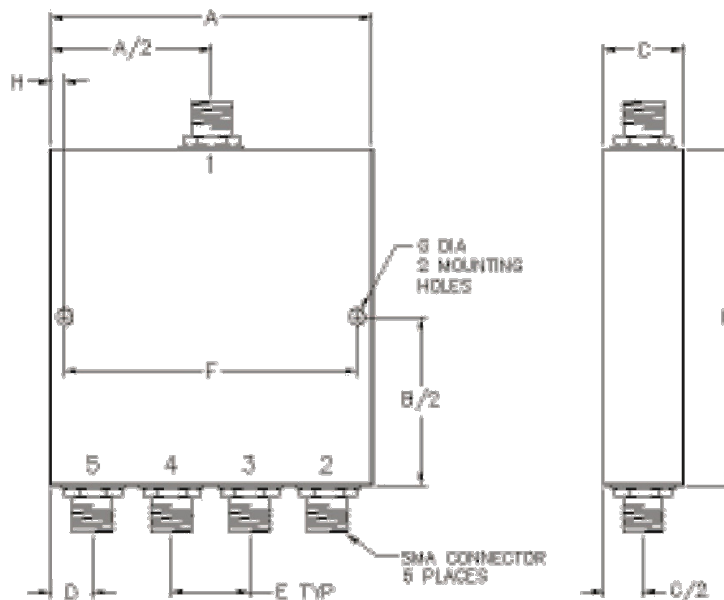
**Operating Temperature:** -40 to +85°C

**Storage Temperature:** -55 to +95°C

**Shock:** 20 G. 11ms

**Vibration:** 20 G. 5 to 200 MHz.

### Outline Drawing:



### Dimensions:

A: 4.00	B: 2.15
C: 1.00	D: .50
E: 1.00	F: 3.60
G: .125	H: .200