

800-1500 MHz 12 Way Power Divider

Part Number: AM400-2000PD6-1227

Electrical Specifications

Frequency Range: 0.4-2.0 GHz

Insertion Loss: 1.20 dB Max.

Isolation: 18 dB Min.

Amplitude Balance: 0.4 dB Max.

Phase Balance: 5° Max.

VSWR: 1.50:1 Max.

Power Rating: 1 Watt Max.

Mechanical

Mounting Method: Threaded Mounting Holes

Connector Type: SMA (F)

Dimensions: 4.00 x 6.00 x 0.40 in.

Environmental

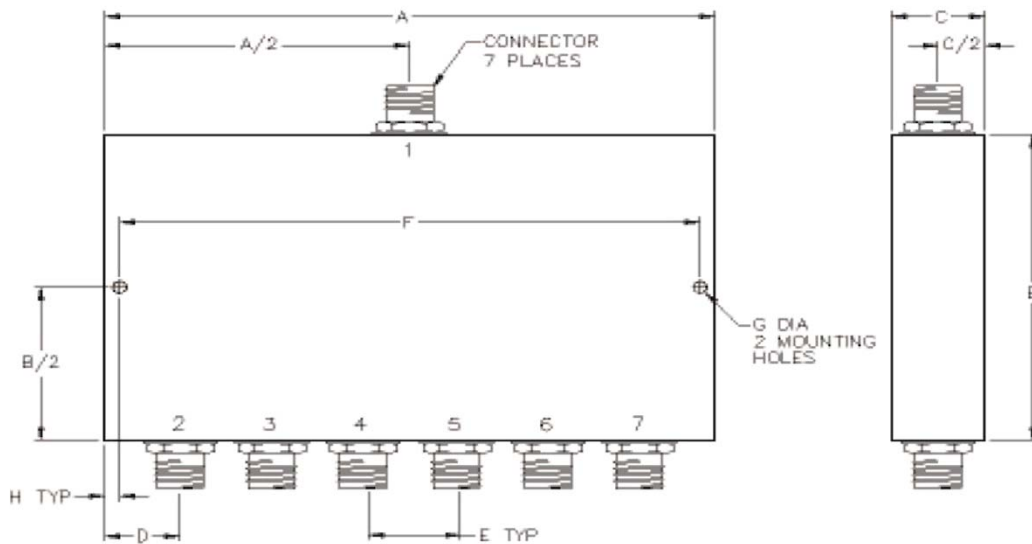
Operating Temperature: -40 to +85°C

Storage Temperature: -55 to +125°C

Shock: 20 G. 11 ms.

Vibration: 20 G. 5 to 200 Hz.

Outline Drawing:



Dimensions:

A: 4.00	B: 6.00
C: .40	D: 0.50
E: .60	F: 3.70
G: .125	H: 0.150