

4.0-8.0 GHz 6 Way Power Divider

Part Number: AM4000-8000PD6-1235

Electrical Specifications

Frequency Range: 4.0-8.0 GHz
Insertion Loss : 2 dB Max.
Isolation: 16 dB Min.
Amplitude Balance: 0.6 dB Max.
Phase Balance: 5° Max.
VSWR: 1.70:1 Max.

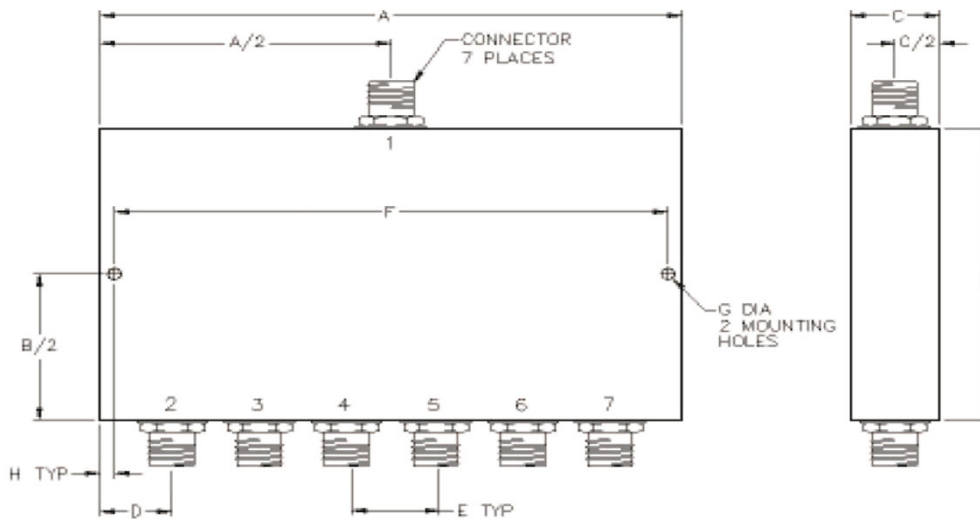
Mechanical

Mounting Method: Threaded Mounting Holes
Connector Type: N-Type (F)
Dimensions: 6.00 x 3.00 x 1.00 in.

Environmental

Operating Temperature: -40 to +85°C
Storage Temperature: -55 to +95°C
Shock: 20 G. 11ms
Vibration: 20 G. 5 to 200 MHz

Outline Drawing:



Dimensions:

A: 6.00	B: 3.00
C: 1.00	D: .50
E: 1.00	F: 5.75
G: .125	H: .125