

4.0-8.0 GHz 6 Way Power Divider

Part Number: AM4000-8000PD6-1236

Electrical Specifications

Frequency Range: 4.0-8.0 GHz

Insertion Loss : 2 dB Max.

Isolation: 16 dB Min.

Amplitude Balance: 0.6 dB Max.

Phase Balance: 5° Max.

VSWR: 1.70:1 Max.

Mechanical

Mounting Method: Threaded Mounting Holes

Connector Type: SMA (F)

Dimensions: 4.75 x 3.00 x 0.50 in.

Environmental

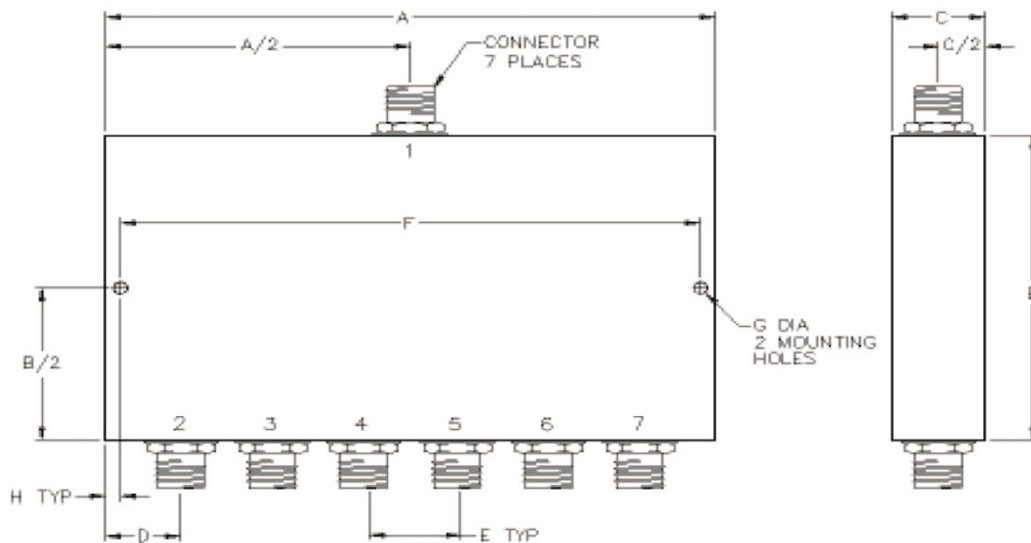
Operating Temperature: -40 to +85°C

Storage Temperature: -55 to +95°C

Shock: 20 G. 11ms

Vibration: 20 G. 5 to 200 MHz.

Outline Drawing:



Dimensions:

A: 4.75	B: 3.00
C: .50	D: .50
E: .75	F: 4.50
G: .125	H: .125