

0.5-1.0 GHz 8 Way Power Divider

Part Number: AM500-1000PD8-1261

Electrical Specifications

Frequency Range: 0.5-1.0 GHz
Insertion Loss: 0.8 dB Max.
Isolation: 20 dB Min.
Amplitude Balance: 0.4 dB Max.
Phase Balance: 5° Max.
VSWR: 1.30:1 Max.

Mechanical

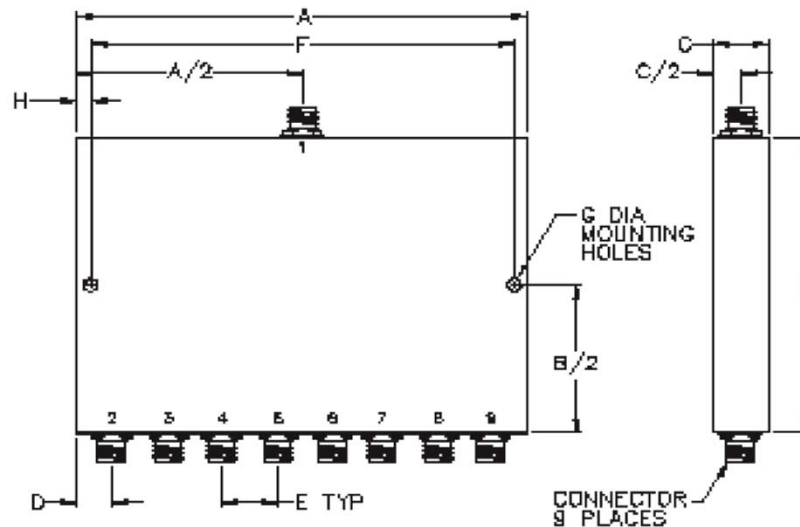
Mounting Method: Threaded Mounting Holes
Connector Type: N-Type
Dimensions: 8.50 x 4.00 x 1.00 in.

Environmental

Operating Temperature: -40 to +85°C
Storage Temperature: -55 to +125°C
Shock: 20 G. 11 ms.
Vibration: 20 G. 5 to 200 Hz.

Note: Available with BNC, TNC, and F connectors

Outline Drawing:



Dimensions:

A: 8.50	B: 4.00
C: 1.00	D: .50
E: 1.00	F: 7.87
G: .150	H: .315