

Electrical Specifications

Frequency Range: 0.5-2.0 GHz
Insertion Loss: 1.3 dB Max.
Isolation: 20 dB Min.
Amplitude Balance: 0.4 dB Max.
Phase Balance: 6° Max.
VSWR: 1.50:1 Max.
Power Rating: 30 Watts Max.

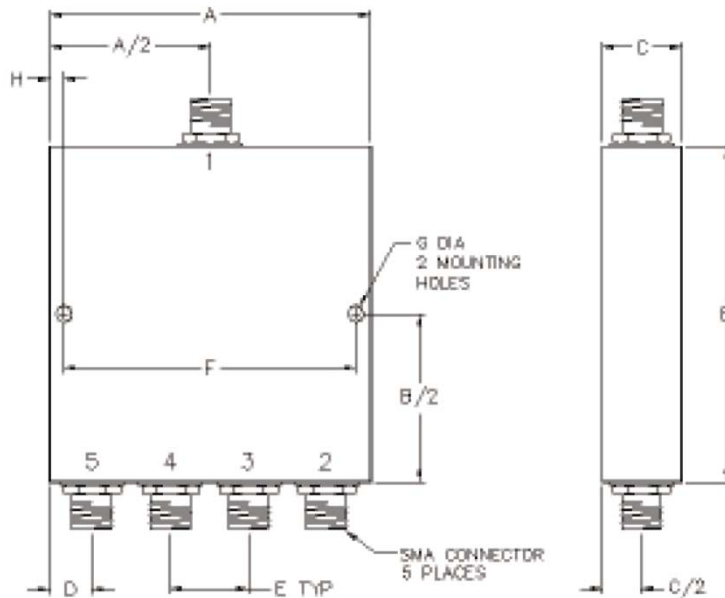
Mechanical

Mounting Method: Threaded Mounting Holes
Connector Type: SMA
Dimensions: 2.63 x 2.90 x 0.51 in.

Environmental

Operating Temperature: -40 to +85°C
Storage Temperature: -55 to +125°C
Shock: 20 G. 11 ms.
Vibration: 20 G. 5 to 200 Hz.

Outline Drawing:



Dimensions:

A: 2.63	B: 2.90
C: .51	D: .55
E: .51	F: 2.38
G: .125	H: .125