

Electrical Specifications

Frequency Range: 0.5-2.0 GHz
Insertion Loss: 1 dB Max.
Isolation: 18 dB Min.
Amplitude Balance: 0.6 dB Max.
Phase Balance: 8° Max.
VSWR: 1.50:1 Max.
Power Rating: 1 Watt Max.

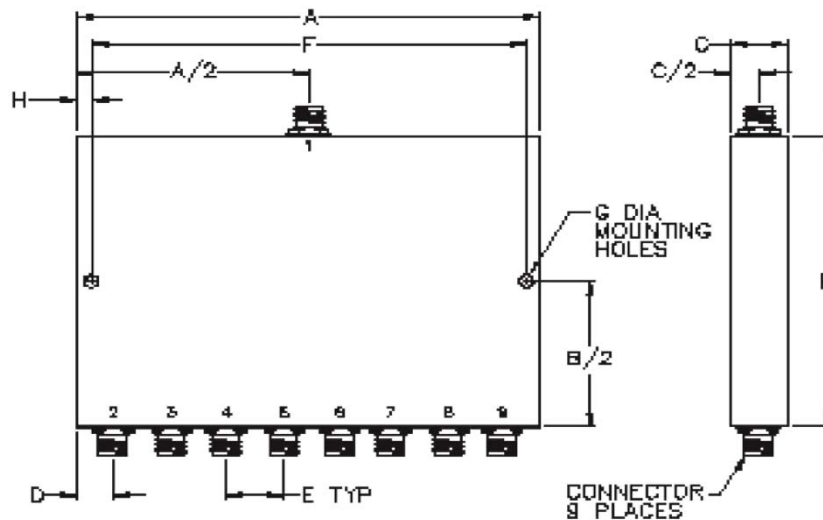
Mechanical

Mounting Method: Threaded Mounting Holes
Connector Type: SMA
Dimensions: 4.50 x 3.00 x 0.40 in.

Environmental

Operating Temperature: -40 to +85°C
Storage Temperature: -55 to +125°C
Shock: 20 G. 11 ms.
Vibration: 20 G. 5 to 200 Hz.

Outline Drawing:



Dimensions:

A: 4.50	B: 3.00
C: 0.40	D: .50
E: .50	F: 4.00
G: .125	H: .250