

# 0.5-2.5 GHz 4 Way Power Divider

## Part Number: AM500-2500PD4-1116

### Electrical Specifications

**Frequency Range:** 0.5-2.5 GHz  
**Insertion Loss:** 1.3 dB Max.  
**Isolation:** 20 dB Min.  
**Amplitude Balance:** 0.4 dB Max.  
**Phase Balance:** 6.0° Max.  
**VSWR:** 1.50:1 Max.  
**Power CW:** 30 Watts Max.

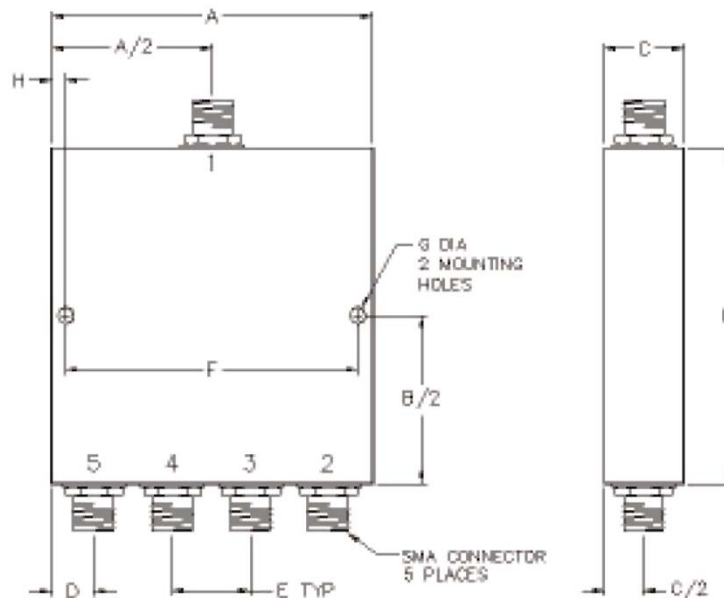
### Mechanical

**Mounting Method:** Threaded Mounting Holes  
**Connector Type:** SMA  
**Dimensions:** 3.60 x 3.40 x 0.51 in.

### Environmental

**Operating Temperature:** -40 to +85°C  
**Storage Temperature:** -55 to +120°C  
**Shock:** 20 G. 11 ms.  
**Vibration:** 20 G. 5 to 200 Hz.

### Outline Drawing:



### Dimensions:

A: 3.60	B: 3.40
C: .51	D: .75
E: .67	F: 3.35
G: .125	H: .125