

Electrical Specifications

Frequency Range: 0.5-3.5 GHz

Insertion Loss: 0.8 dB Max.

Isolation: 20 dB Min.

Amplitude Balance: 0.4 dB Max.

Phase Balance: 8° Max.

VSWR: 1.40:1 Max.

Input Power: 30 Watt Max.

Mechanical

Mounting Method: Threaded Mounting Hole

Connector: SMA

Dimensions: 2.63 x 2.90 x 0.51 in.

Environmental

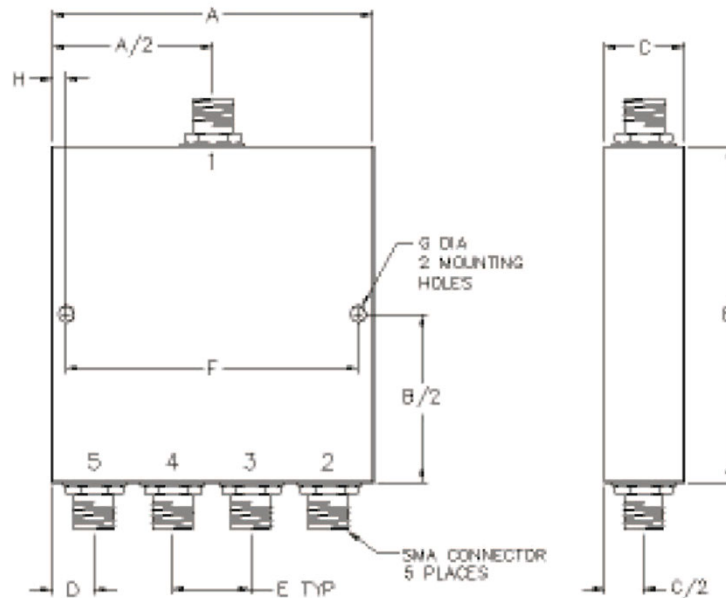
Operating Temperature: -40 to +80°C

Storage Temperature: -55 to +120°C

Shock: 20 G. 11 ms.

Vibration: 20 G. 5 to 200 Hz.

Outline Drawing:



Dimensions:

A: 2.63	B: 2.90
C: .51	D: .55
E: .51	F: 2.38
G: .125	H: .125