

**Electrical Specifications**

**Frequency Range:** 5.0-18.0 GHz

**Insertion Loss :** 2 dB Max.

**Isolation:** 15 dB Min.

**Amplitude Balance:** 0.8 dB Max.

**Phase Balance:** 10° Max.

**VSWR:** 1.80:1 Max.

**Input Power:** 30 Watt Max.

**Mechanical**

**Mounting Method:** Threaded Mounting Holes

**Connector Type:** SMA (F)

**Dimensions:** 3.50 x 2.00 x 0.40 in.

**Environmental**

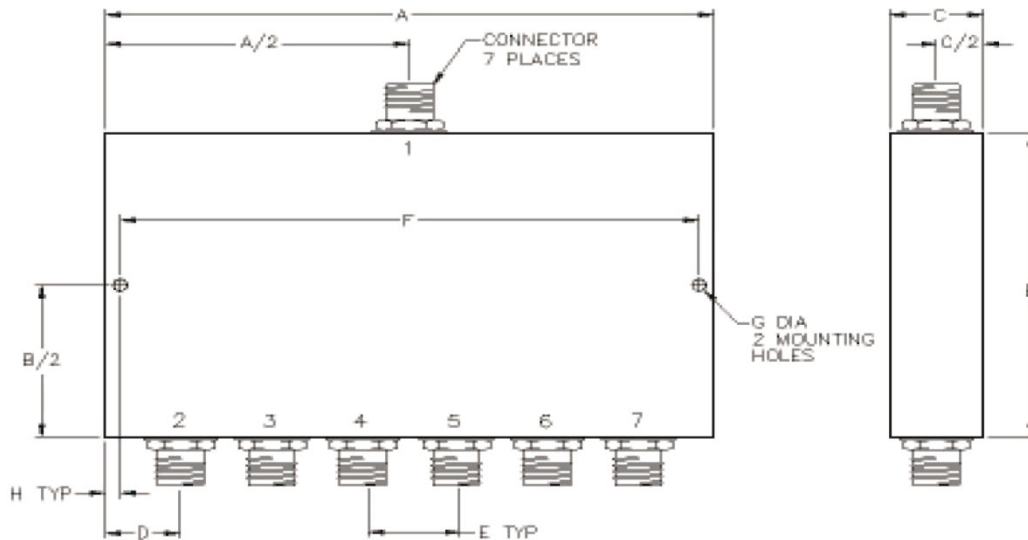
**Operating Temperature:** -40 to +85°C

**Storage Temperature:** -55 to +95°C

**Shock:** 20 G. 11ms

**Vibration:** 20 G. 5 to 200 MHz.

**Outline Drawing:**



**Dimensions:**

A: 3.50	B: 2.00
C: 0.40	D: 0.50
E: 0.50	F: 3.25
G: 0.125	H: 0.125