

Electrical Specifications

Frequency Range: 5.0-18.0 GHz

Insertion Loss: 1.5 dB Max.

Isolation: 15 dB Min.

Amplitude Balance: 0.5 dB Max.

Phase Balance: 12.0° Max.

VSWR: 1.70:1 Max.

Input Power: 30 Watts Max.

* For load VSWR better than 1.2:1

Mechanical

Mounting Method: Threaded Mounting Holes

Connector Type: SMA

Dimensions: 2.23 x 2.15 x 0.51 in.

Environmental

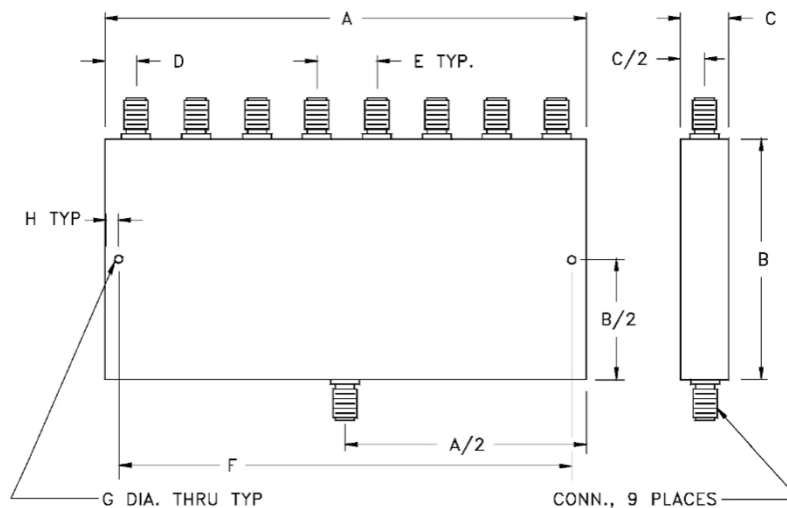
Operating Temperature: -25 to +80°C

Storage Temperature: -55 to +150°C

Shock: 20 G. 11ms

Vibration: 20 G. 5 to 200 MHz

Outline Drawing:



A: 4.00	B: 2.00
C: 0.40	D: 0.25
E: 0.50	F: 3.75
G: 0.15	H: 0.125