

5.8-6.4 GHz 12 Way Power Divider

Part Number: AM5800-6400OD12-1317

Electrical Specifications

Frequency Range: 5.8-6.4 GHz
Insertion Loss : 1.6 dB Max.
Isolation: 16 dB Min.
Amplitude Balance: 0 .5 dB Max.
Phase Balance: 9° Max.
VSWR: 1.80:1 Max.

Mechanical

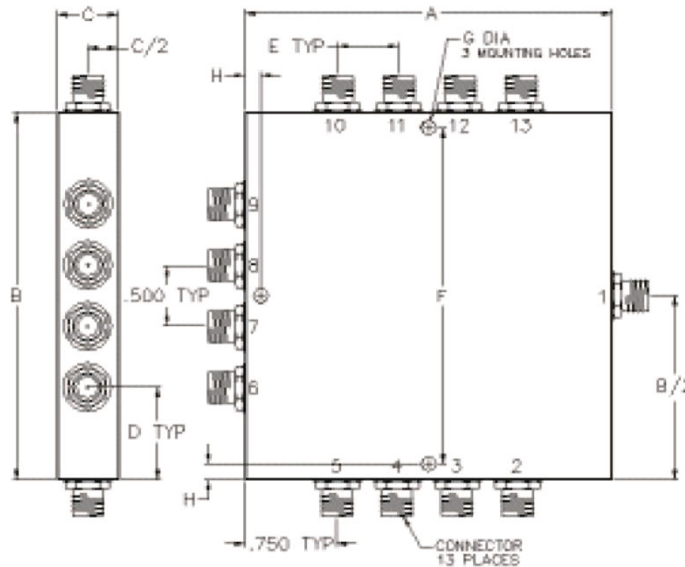
Mounting Method: Threaded Mounting Holes
Connector Type: SMA (F)
Dimensions: 3.00 x 3.00 x 0.40 in.

Environmental

Operating Temperature: -40 to +85°C
Storage Temperature: -55 to +95°C
Shock: 20 G. 11ms
Vibration: 20 G. 5 to 200 MHz.

*Note: Available in BNC, TNC, and F connectors and other frequency ranges.

Outline Drawing:



Dimensions:

A: 3.00	B: 3.00
C: 0.40	D: .75
E: 0.50	F: 2.75
G: .125	H: .125