



Electrical specifications

Frequency Range: 645-655 MHz
Center Frequency: 650 MHz
Isolation: 27 dB min
Insertion loss: 0.20 dB max
VSWR: 1.15
Power: 400 W

Mechanical

Mounting Method: Threaded Mounting Holes
Connector Type: N-Type (F)
Dimensions: 2.09 x 2.09 x 0.90 in.

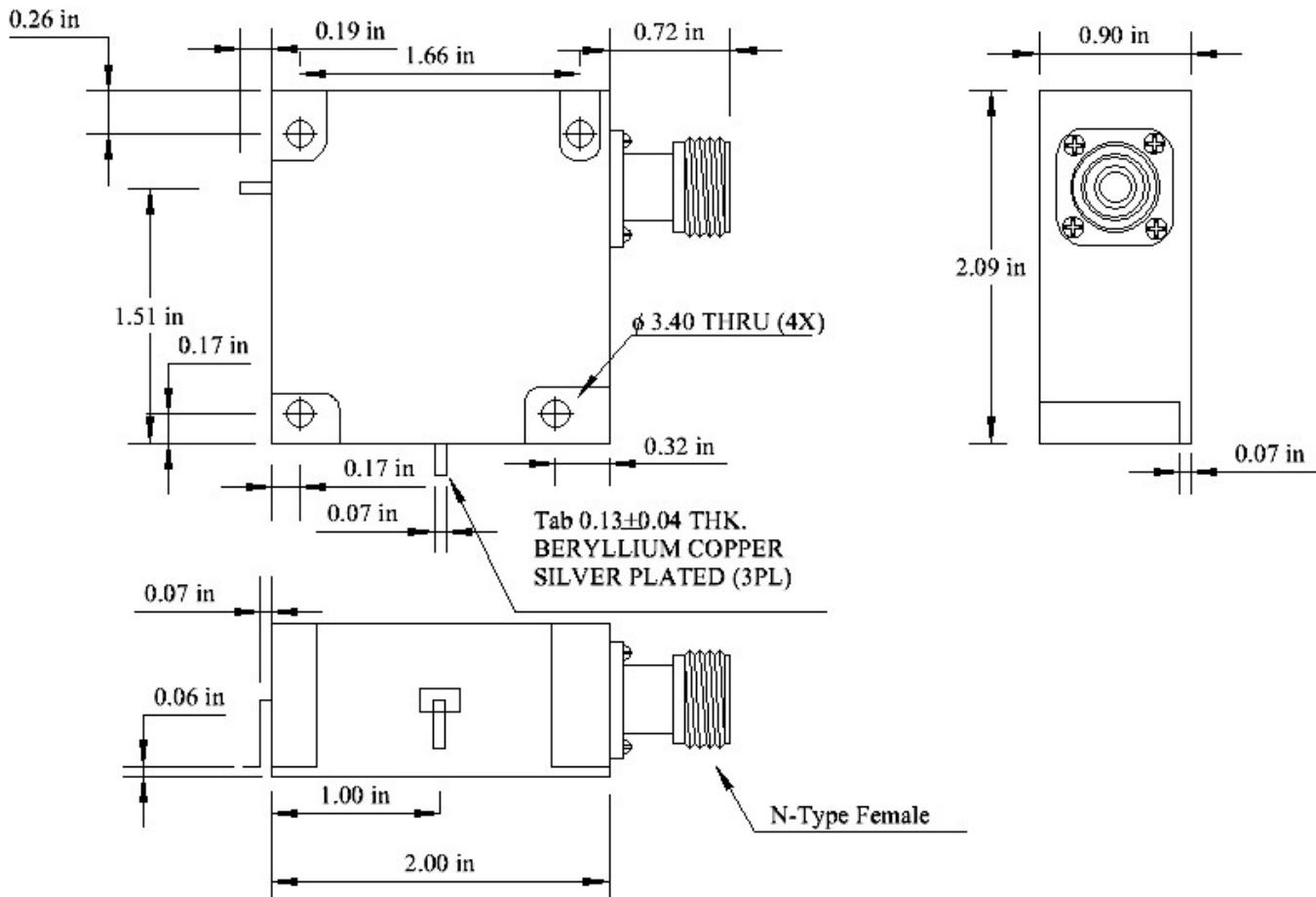
Environmental

Operating Temperature: -45 to +85 deg.C
Storage Temperature: -55 to +95 deg.C

Note:

- Housing: Magnetic shielded metal case
- Size and Mounting: Mounting with M3 screws
- Direction: Clockwise
- Distance between connecting metal strip and outer body should be sufficient to avoid any arcing at full power
- S Parameters of all supplied items should include actual supply

Outline Drawing:



This must be mounted on a heat sink of sufficient thermal dissipation to control the mounting flange of the part to a maximum temperature at 100°C