

Electrical Specifications

Frequency Range: 0.8-1.0 GHz
Insertion Loss: 0.3 dB Max.
Isolation: 20 dB Min.
Amplitude Balance: 0.3 dB Max.
Phase Balance: 3° Max.
VSWR: 1.30:1 Max.
Power Rating: 1 Watt Max.

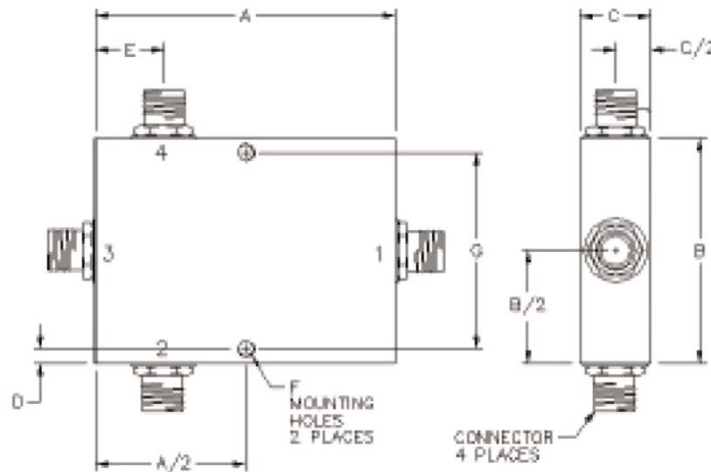
Mechanical

Mounting Method: Threaded Mounting Holes
Connector Type: SMA (Female)
Dimensions: 3.20 x 1.50 x 0.51 in.

Environmental

Operating Temperature: -40 to +85°C
Storage Temperature: -55 to +125°C
Shock: 20 G. 11 ms.
Vibration: 20 G. 5 to 200 Hz.

Outline Drawing:



A: 3.20 B: 1.50
C: 0.51 D: 0.125
E: .59 F: 0.125
G: 1.25