

0.8-2.2 GHz 2 Way Power Divider

Part Number: AM800-2200PD2-1114

Electrical Specifications

Frequency Range: 0.8-2.2 GHz
Insertion Loss: 1 dB Max.
Isolation: 20 dB Min.
Amplitude Balance: 0.4 dB Max.
Phase Balance: 6.0° Max.
VSWR: 1.40:1 Max.
Power CW: 30 Watts Max.

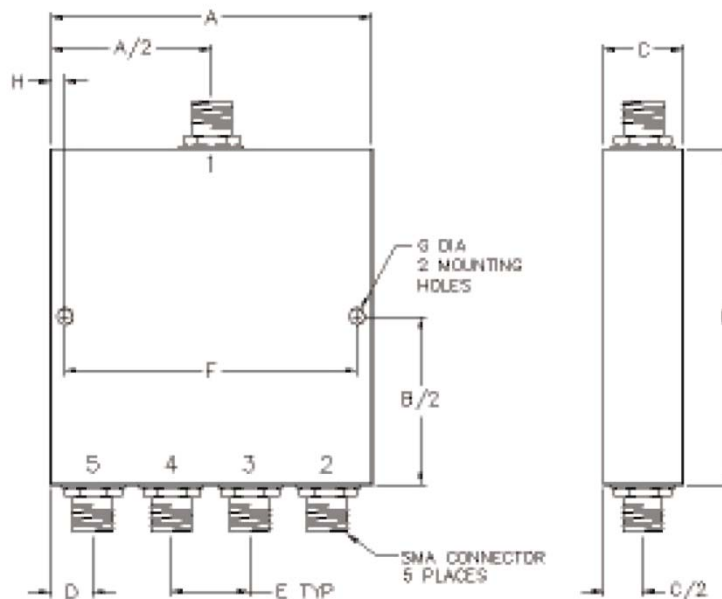
Mechanical

Mounting Method: Threaded Mounting Holes
Connector Type: SMA
Dimensions: 2.23 x 2.15 x 0.51 in.

Environmental

Operating Temperature: -40 to +85°C
Storage Temperature: -55 to +120°C
Shock: 20 G. 11 ms.
Vibration: 20 G. 5 to 200 Hz.

Outline Drawing:



Dimensions:

A: 2.23	B: 2.15
C: .51	D: .35
E: .51	F: 1.98
G: .125	H: .125