

0.8-2.2 GHz 6 Way Power Divider

Part Number: AM800-2200PD6-1230

Electrical Specifications

Frequency Range: 0.8-2.2 GHz
Insertion Loss: 1.4 dB Max.
Isolation: 18 dB Min.
Amplitude Balance: 0.4 dB Max.
Phase Balance: 6.0° Max.
VSWR: 1.60:1 Max.
Power CW: 1 Watts Max.

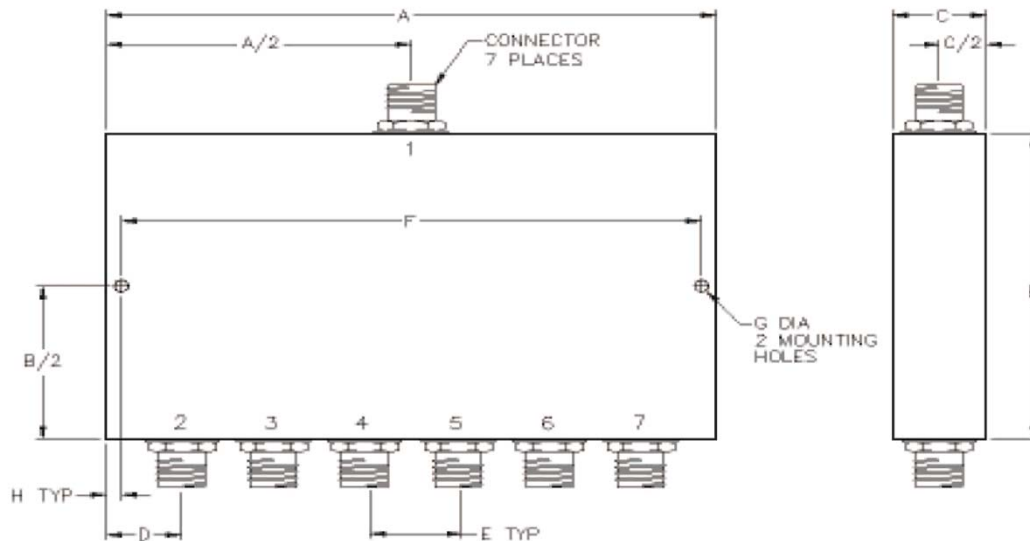
Mechanical

Mounting Method: Threaded Mounting Holes
Connector Type: SMA (F)
Dimensions: 4.00 x 6.00 x 0.40 in.

Environmental

Operating Temperature: -40 to +85°C
Storage Temperature: -55 to +120°C
Shock: 20 G. 11 ms.
Vibration: 20 G. 5 to 200 Hz.

Outline Drawing:



Dimensions:

A: 4.00	B: 6.00
C: .40	D: .50
E: .60	F: 3.70
G: .125	H: .150