

**Electrical Specifications**

**Frequency Range:** 0.8-0.9 GHz  
**Insertion Loss:** 0.6 dB Max.  
**Isolation:** 20 dB Min.  
**Amplitude Balance:** 0.4 dB Max.  
**Phase Balance:** 3° Max.  
**VSWR:** 1.50:1 Max.  
**Power Rating:** 1 Watt Max.

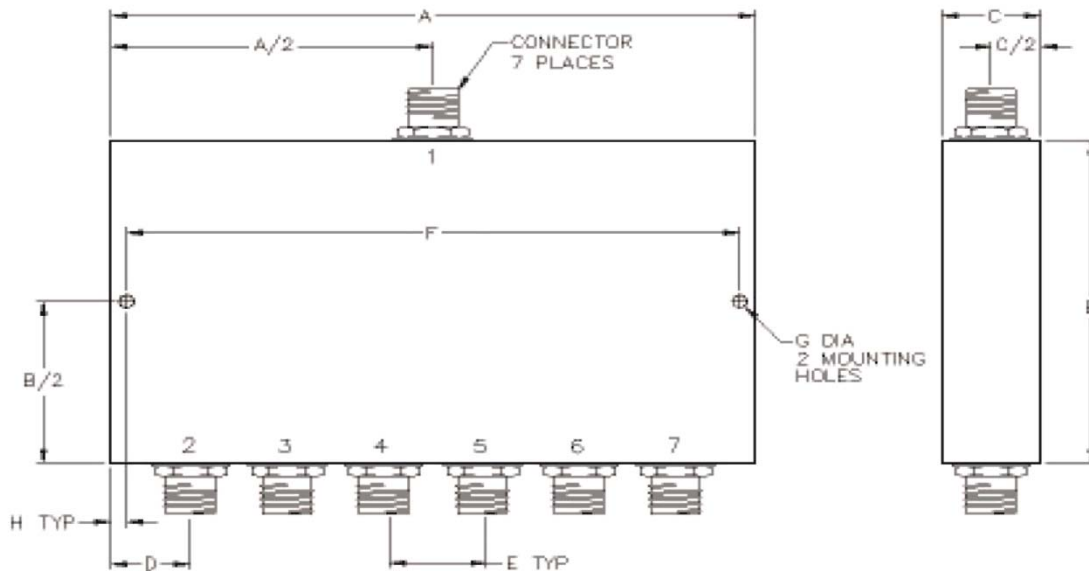
**Mechanical**

**Mounting Method:** Threaded Mounting Holes  
**Connector Type:** SMA (F)  
**Dimensions:** 4.00 x 3.45 x 0.40 in.

**Environmental**

**Operating Temperature:** -40 to +85°C  
**Storage Temperature:** -55 to +125°C  
**Shock:** 20 G. 11 ms.  
**Vibration:** 20 G. 5 to 200 Hz.

**Outline Drawing:**



**Dimensions:**

A: 4.00	B: 3.45
C: .40	D: .50
E: .60	F: 3.75
G: .125	H: .125