

Electrical Specifications

Frequency Range: 8.0-12.4 GHz

Insertion Loss : 0.8 dB Max.

Isolation: 16 dB Min.

Amplitude Balance: 0.5 dB Max.

Phase Balance: 6° Max.

VSWR: 1.45:1 Max.

Input Power: 30 Watt Max.

Mechanical

Mounting Method: Threaded Mounting Holes

Connector Type: SMA

Dimensions: 2.23 x 2.15 x 0.51 in.

Environmental

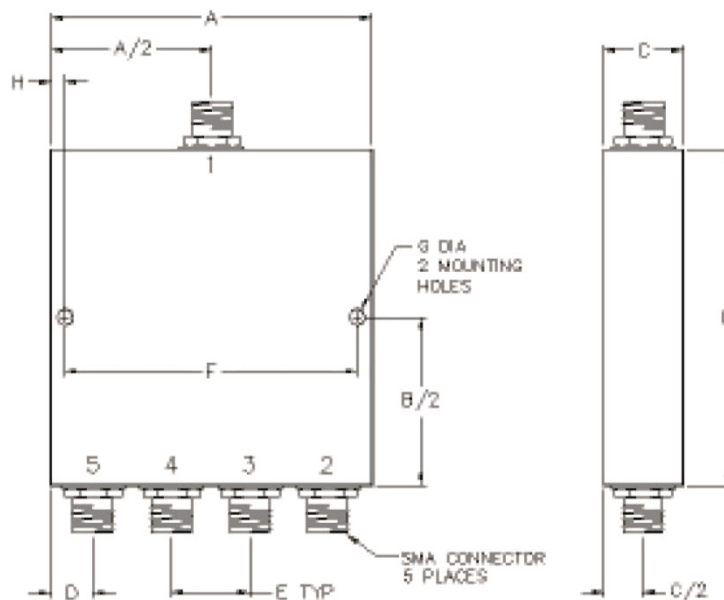
Operating Temperature: -40 to +85°C

Storage Temperature: -55 to +95°C

Shock: 20 G. 11ms

Vibration: 20 G. 5 to 200 MHz

Outline Drawing:



Dimensions:

A: 2.23	B: 2.15
C: .51	D: .35
E: .51	F: 1.98
G: .125	H: .125