

**Electrical Specifications**

**Frequency Range:** 9-12 GHz  
**Coupling:** 50 dB  
**Directivity:** 15 dB Min.  
**Average Power:** 150 Watts

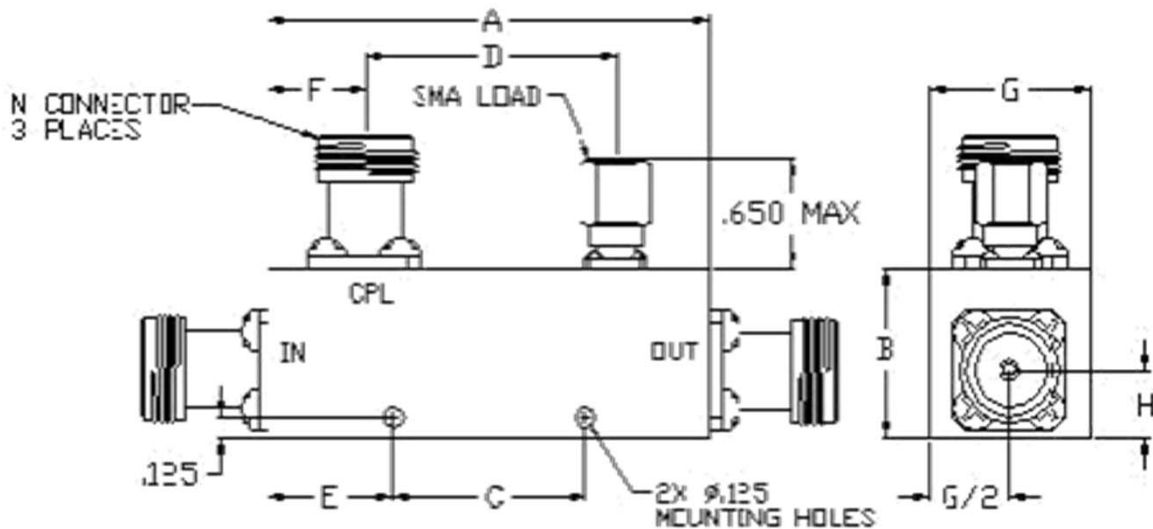
**Mechanical**

**Mounting Method:** Threaded Mounting Holes  
**Connector Type:** N-Type (F), SMA (F)  
**Dimensions:** 1.50 x 1.00 x 1.00 inches

**Environmental**

**Operating Temperature:** -40 to 85° C  
**Storage Temperature:** -55 to +100° C

**Outline Drawing:**



A: 1.50 B: 1.00  
 C: 0.75 D: 0.65  
 E: 0.38 F: 0.45  
 G: 1.00 H: 0.50